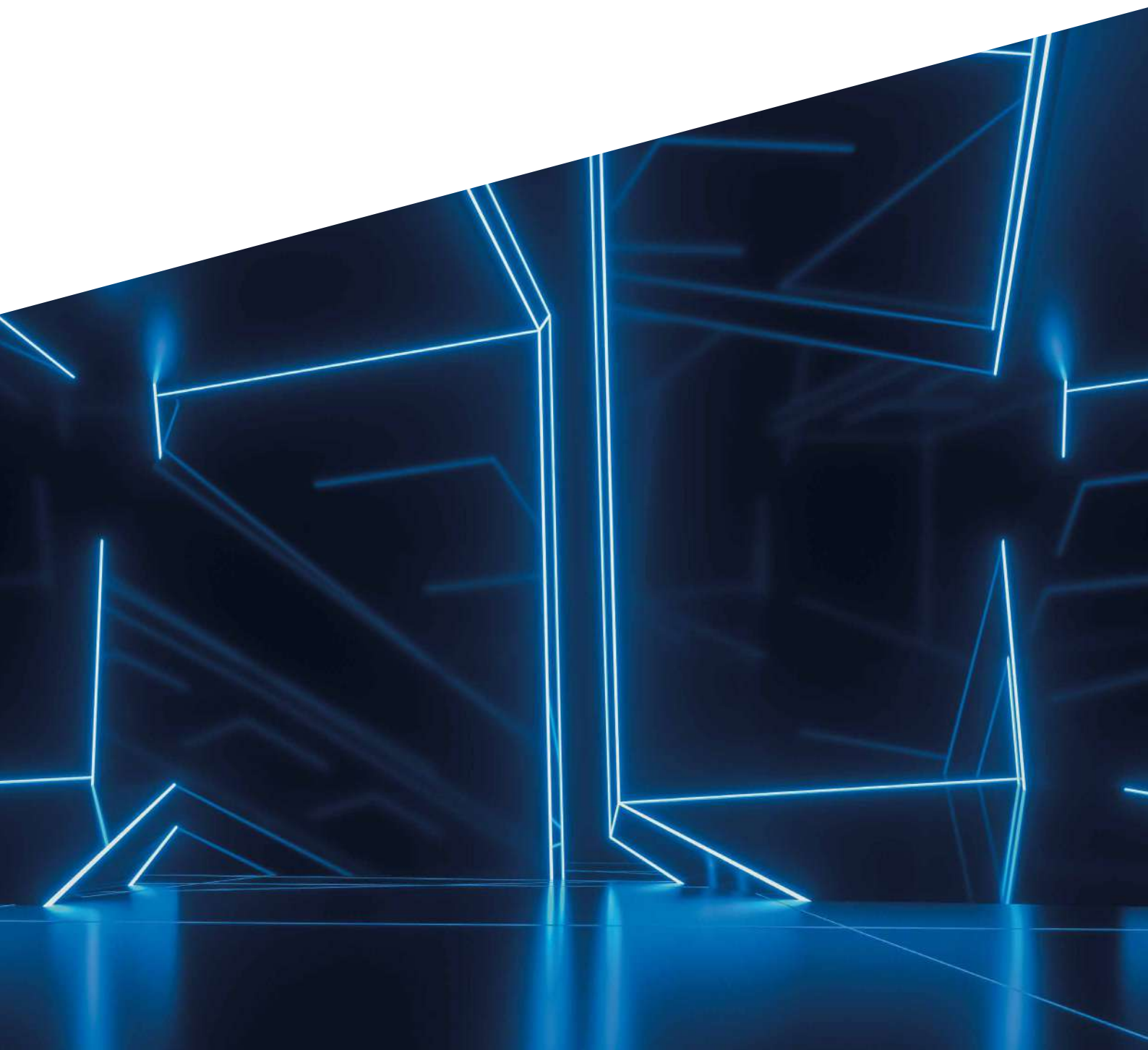


INDUSTRIAL – NEW PRODUCTS

Components for electrical enclosures,
energy management, industrial automation and IECEx - ATEX



ABOUT US



Finder was founded in Italy in 1954. Since then it has been designing and manufacturing a wide range of electromechanical and electronic components for both the residential and industrial sectors. Today, thanks to its global vision, Finder now distributes its products around the world through a network of 29 company-owned subsidiaries and more than 80 trade partnerships. Finder is an international family made up of more than 1300 individuals, all united by the same values and passion for our products.



14,500 different products to satisfy a myriad of applications. From products at the heart of automation to the control of machines, power, time, temperature, liquid level and light



OUR PRODUCTS CARRY MORE CERTIFICATIONS THAN ANY OTHER RELAY MANUFACTURER

FINDER IS AN ITALIAN BRAND WITH A WORLDWIDE PRESENCE

- 4** PRODUCTION PLANTS IN EUROPE
- 29** SUBSIDIARIES
- +80** OFFICIAL DISTRIBUTORS



ENVIRONMENTAL, SOCIAL AND GOVERNANCE (ESG)

Finder considers social and environmental sustainability as fundamental principles of doing business, just as it believes that business growth must develop in synergy with a conscious vision of the future. That is why Finder is committed to reducing and eliminating CO2 emissions, focusing on circularity, caring for its employees to foster a safe, fair and inclusive work environment, spreading a culture of integrity and transparency, and collaborating with stakeholders who share its values.

This focus is demonstrated by the company's commitment to the following internationally recognized projects and certifications:



AUTONOMY AND INDEPENDENCE

Finder's managerial, financial and technological autonomy allows optimal control over all its business processes, the results of which include simplified customs procedures and a high reliability of commercial relations.

Contents

- 8A Series - OPTA - PROGRAMMABLE LOGIC RELAYS (PLR) page 2
- 8A Series - OPTA - EXPANSION MODULES page 4
- 78 Series - OPTA - Power supply page 7
- 83 Series - Modular timers page 8
- 6M Series - Modbus power analyzer products page 9
- 7M Series - Smart energy meters page 10
- 6K Series - Industrial Contactors page 12
- 77 Series - Solid State Relays (SSR) page 14
- 7U Series - Power outlets for electrical enclosures page 16
- 7F Series - Filter fans and exhaust filters page 17
- 7P Series - Surge Protection Devices (SPD) page 18
- 78 Series - Switch mode power supplies page 20

OPTA

PROGRAMMABLE LOGIC RELAYS

8A Series



THE UNIQUE NEW PROGRAMMABLE LOGIC RELAY

Free programmable with ARDUINO IDE, ARDUINO PLC-IDE or IEC 61131-3 languages

Easily create applications for industrial automation, OEMs and building automation



POWERFUL



CONNECTED



SECURE



OPEN SOURCE



EASY



VERSATILE



OPTA

PROGRAMMABLE LOGIC RELAYS

8A Series

OPTA RANGE

LITE



Type 8A.04.9.024.8300

- Supply 12...24 V DC
- 8 Digital/Analog (0-10 V) input
- 4 NO relay output contacts, rated 10 A
- USB (type C) High Speed port for:
 - Programming
 - Data logging (via memory stick)
- RJ45 for Ethernet connections or MODBUS TCP/IP

PLUS

+ RS485



Type 8A.04.9.024.8310

- Supply 12...24 V DC
- 8 Digital/Analog (0-10V) input
- 4 NO relay output contacts, rated 10 A
- USB (type C) High Speed port for:
 - Programming
 - Data logging (via memory stick)
- RJ45 for Ethernet connections or MODBUS TCP/IP
- RS485 Port for MODBUS RTU connection

ADVANCED

+ WIFI and BLE



Type 8A.04.9.024.8320

- Supply 12...24 V DC
- 8 Digital/Analog (0-10V) input
- 4 NO relay output contacts, rated 10 A
- USB (type C) High Speed port for:
 - Programming
 - Data logging (via memory stick)
- RJ45 for Ethernet connections or MODBUS TCP/IP
- RS485 Port for MODBUS RTU connection
- WIFI/BLE integrated module



POWER SUPPLY



Type 78.12.1.230.2482

- 24 V DC power supplies
- Peak current: 2 A
- 15 W, only one module wide (17,5mm)
- Short circuit protection
- Thermal protection
- Overvoltage protection
- SELV



OPTA

EXPANSION MODULES



EASILY EXPAND THE PLR'S POTENTIAL FOR GREATER FLEXIBILITY



OEM PROJECTS



BUILDING AUTOMATION



INDUSTRY 4.0



OPTA

EXPANSION MODULES

THE RANGE



Type 8A.58.9.024.1600

- 16 digital/analog (0...10 V) inputs
- 8 EMR 6A outputs
- Nominal voltage 12...24 V DC



Type 8A.88.9.024.1600

- 16 digital/analog (0...10 V) inputs
- 8 SSR 2A outputs
- Nominal voltage 12...24 V DC



Type 8A.26.9.024.0600

- 6 analog 0...10 V, 4...20 mA, PT 100/1000 inputs
- 2 analog 0...10 V, 4...20 mA outputs
- 4 PWM outputs
- Nominal voltage 24 V DC

opta.findernet.com



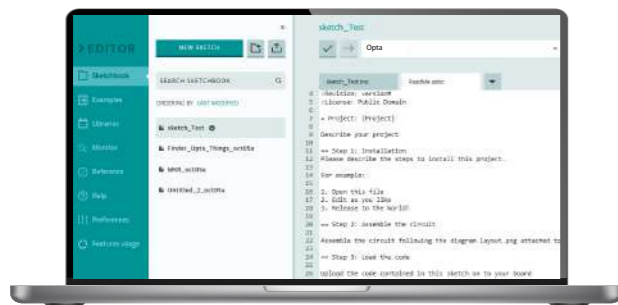
OPTA

ALL THE PROGRAMMING LANGUAGES YOU NEED



NO LICENSE REQUIRED

Using ARDUINO IDE, the Open-Source Arduino Software



FREE LICENSE

Using ARDUINO PLC-IDE for IEC 61131-3 (LADDER, FBD, etc.) languages



Powerful



Connected



Secure



Open Source



Easy



Versatile

78 Series – OPTA Power Supply

Compact DC power supply, designed for use with OPTA

- 24 V DC, 12 W output
- 17.5 mm wide
- High peak output current
- Suitable for SELV applications
- Thermal, overload and short-circuit protection
- 15 W up to 40 °C
- UL certified

designed for cyber security

A SUPER POWERFUL PROCESSOR

PROCESSOR ST dual-core Cortex® M7+M4

Super fast real-time processing to manage calculations for predictive maintenance and OTA (Over-The-Air) updates

CRYPTO CHIP

Enhanced IoT security thanks to the onboard secure element chip



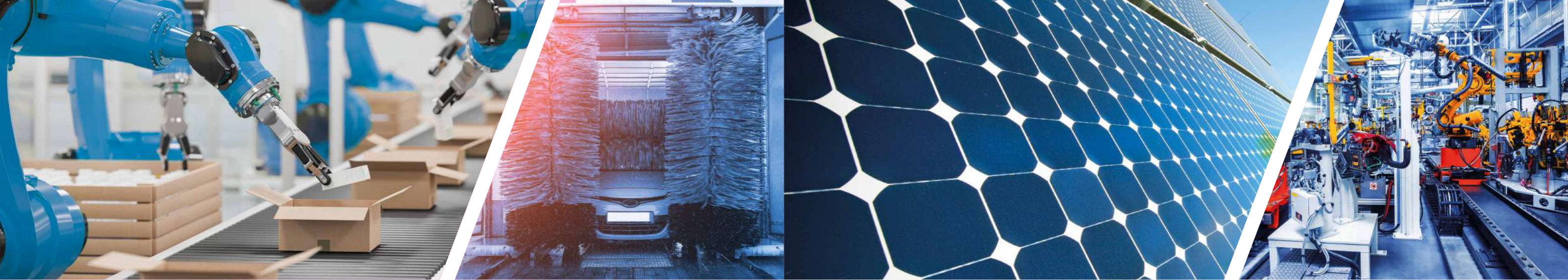
Type 78.12.1.230.2482



78 Series
See technical data sheet

Approvals





Packaging machines



Automatic car-washes



Industrial automation



Panels for electrical distribution



Pump control



Charging Stations



Energy management



Inverters



Industrial automation



Panels for electrical distribution



PV applications

83 Series - IECEx Modular Timer



- Multifunction, multi-voltage IECEx, Ex (Zone 2, Category 3), HazLoc (CI I, Div.2) timer
- 2 timed contacts or 1 timed + 1 instantaneous contact
- Timing can be regulated using an external potentiometer



Type 83.02.0.240.0003

- $U_n = 24 \dots 240$ V AC/DC
- 2 Change over contacts, 277 V AC, 10 A
- **ATEX:** II 3 G Ex ec nC IIC T4 Gc
- **IECEX:** Ex ec nC IIC T4 Gc
- **HazLoc:** CI I, Div2, Gr A, B, C, D, T4, CI I, Zn 2, AEx ec nC IIC T4, Ex ec nC IIC T4 Gc X

6M Series – Modbus power analyzer products

Single phase Modbus quality power Monitors

All-in-one CT, Power/Energy meter and Supply quality monitor + Modbus communications.

- True-RMS AC and DC measurements
- Accuracy class: 0.5% F.S.
- Measurement: up to 300 A - 800 V AC - up to 400 A - 1000 V DC
- Bi-directional active energy measurement kWh
- Working frequency: DC or 1...400 Hz
- Fully configurable via Modbus RS485 interface (free software)



Type 6M.TA.9.024.1200
50 A - 800 V AC/1000 V DC



Type 6M.TB.9.024.1200
100 A - 800 V AC/1000 V DC



Type 6M.TF.9.024.1200
300 A - 800 V AC,
400 A - 1000 V DC



Type 6M.BU.0.024.2200
Modbus RS485 RTU - Modbus TCP/IP Gateway
with on board web server interface.

- Ethernet com port: 10/100 Mb/s (Max 10 Client)
- Modbus RTU com port: RS485 up to 115.200 bit/s (Max 200 slave)
- User interface: 6 LED
- Insulation between power supply, RS485, Ethernet: 1500 V



83 Series
See technical
data sheet

Approvals
(according to type)



6M Series
See technical
data sheet

Approvals
(according to type)





Charging Stations



Energy management



Inverters



Industrial automation



Panels for electrical distribution



PV applications



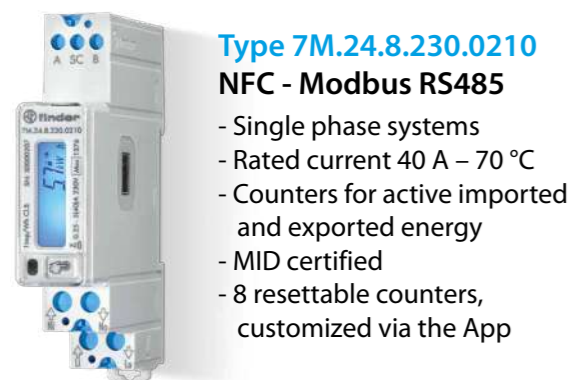
NFC technology

7M Series – Smart Energy meters

Energy meters with NFC technology, MID certified at 70°C and RS485 Modbus integrated interface.

Ideally suited for electric vehicle charging systems as well as other single and three phase systems, 3 or 4 wire, with rated currents up to 80 A.

NFC technology allows meter reading even in the absence of mains voltage, and allows for the programming of counters via smartphone.



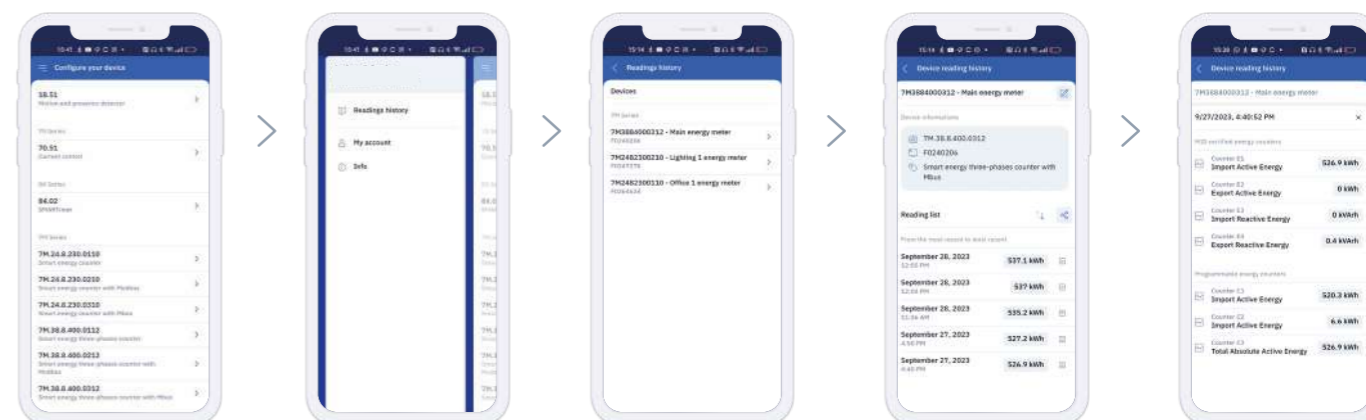
Type 7M.24.8.230.0210
NFC - Modbus RS485

- Single phase systems
- Rated current 40 A – 70 °C
- Counters for active imported and exported energy
- MID certified
- 8 resettable counters, customized via the App



Type 7M.38.8.400.0212
NFC - Modbus RS485

- Three phase systems with or without neutral or for single phase systems
- Rated current 80 A – 70 °C
- Counters for active imported and exported energy
- MID certified
- 16 resettable counters, customized via the App



With the latest update of the Finder Toolbox App and thanks to the NFC technology is possible to:

- store energy readings made with the 7M Series energy meters on the Cloud
- check the consumption trends on your smartphone
- send CSV files via email to create graphs, and to analyze power consumption data on your PC
- give the energy meter a name, for easy recognition
- no annual fee to store your data



7M Series
See technical data sheet

Approvals
(according to type)





Power generators



Back-up generators



Industrial motors



Panels for electrical distribution



Pump control

6K Series - Industrial Contactors

New 6K Series, three or four pole industrial contactors for powers from 4 up to 37 kW in AC3 according to IEC/EN 60947. Possible connection of front auxiliary modules from 1 to 4 poles in various configurations.

- 3 NO contacts rated 4 kW...37 kW, and 9 A...74 A
- According to EN 60947 / IEC 947
- Nominal voltage: 120 V AC, 230 V AC, 24 V AC
- 1 NO or NC auxiliary contact rated 3 A (according to type)
- Auxiliary block contact 3 A in various configurations available
- AgSnO₂ contacts
- 35 mm rail (EN 60715) mount



Type 6K.04.8.230.4809

9 A - 400 V AC3
4 kW



Type 6K.14.8.230.4810

10 A - 400 V AC3
4 kW



Type 06K.11

3 A - 400 V AC3
1 NO

Type 06K.12

3 A - 400 V AC3
1 NC



Type 06K.03

3 A - 400 V AC3
1 NO + 1 NC



Type 6K.13.8.230.4324

24 A - 400 V AC3
11 kW



Type 6K.13.8.230.4350

74 A - 400 V AC3
37 kW

Approvals
(according to type)



Approvals
(according to type)





Drying kilns



Industrial furnaces and ovens



Industrial motors



Packaging machines



Lights control



Bottling plant

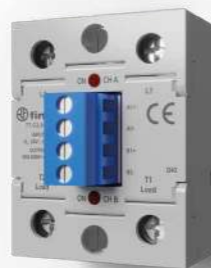
77 Series - Solid State Relays (SSR)

New "hockey puck" style Solid State Relays for single phase applications up to 125 A, dual phase with 2 independent channels up to 75A and for three phase systems up to 80A.



Type 77.x1

- Single phase SSR with SCR power output device
- Nominal switching (load) current: 25, 40, 60, 80, 100 or 125 A versions
- 2 different versions for different nominal output voltage: 230 V AC and 600 V AC: "8250" version: 24...280 V AC load voltage, Zero Crossing switching "8650" version: 24...660 V AC load voltage, Zero Crossing switching
- Nominal coil voltage: 24 V DC or 230 V AC
- Dielectric strength: 4000 V AC



Type 77.x2

- Dual phase SSR with 2 independent channels
- Dual independent SCR power outputs
- Nominal switching (load) current: 25, 50, 75 A versions
- 600 V AC output voltage in Random switching mode
- Nominal coil voltage: 24 V DC
- Dielectric strength: 4000 V AC



Type 77.x3

- Three phase SSR with SCR output power device
- Nominal switching current load: 25, 40, 60 or 80 A
- 600 V AC output voltage in Random switching mode
- Nominal coil voltages: 24 V DC or 230 V AC
- Dielectric strength: 4000 V AC

Approvals
(according to type)



Approvals
(according to type)





Panels for electrical distribution



Control panels



Drying kilns



Panels for electrical distribution



Control panels



Forced-air ventilators

7U Series – Power outlets for electrical enclosures

For a secure and approved power outlet for use within electrical enclosures.
Voltage indication LED version available.

- Nominal voltage: 230 V AC or 125 V AC (USA version)
- Nominal current: up to 16 A; 15 A (USA version)
- Voltage indication LED version available
- 45 mm wide
- 35 mm rail (EN 60715) mount

Compatible with Schuko
+ Italian Bipasso



Type 7U.00.8.230.0010 (Grey RAL 7035)
Type 7U.00.8.230.0002 (Yellow RAL 1021)

Compatible with
French systems



Type 7U.01.8.230.0000 (Grey RAL 7035)
Type 7U.01.8.230.0012 (Yellow RAL 1021)

Compatible with
US systems



Type 7U.02.8.125.0010
(Grey RAL 7035)

7F Series – Filter fans and exhaust filters for outdoor applications

Ensuring the optimum performance of components and instrumentation
within control panels and electrical enclosures, for both indoor and outdoor use.

- Nominal voltages: 120 V AC, 230 V AC or 24 V DC
- Easily replaceable filter mat
- Minimal depth within enclosure
- Air flow (24...700)m³/h
- Reduced installation and maintenance times thanks to quick coupling system
- Very low acoustic noise
- IP54/Type 3R protection rating
- Grey RAL 7000



Type 7F.30.8.xxx.4400
for outdoor use



7U Series
See technical
data sheet

Approvals
(according to type)



7F Series
See technical
data sheet

Approvals
(according to type)





Surge protection



Road / tunnel lighting



Panels for electrical distribution



Control panels



PV applications



Surge protection



Road / tunnel lighting



Panels for electrical distribution



Control panels



Elevators and lifts

7P Series – NEW Type 1+2 SPDs for Photovoltaic Applications

Type 1+2 SPDs for PV systems – Compact size with high total discharge current up to 12.5 kA
Upside down mounting – Suitable up to 1500 V DC of U_{CPV}



Type 7P.13.9.000.1006

- (parameters for each pole)
- PV SPD Type 1+2 - Y connection
 - $U_{CPV} = 1050$ V DC
 - $I_{imp} = 6.25$ kA (single pole)
 - $I_n = 20$ kA
 - $I_{max} = 40$ kA



Type 7P.13.9.500.1006

- (parameters for each pole)
- PV SPD Type 1+2 - Y connection
 - $U_{CPV} = 1500$ V DC
 - $I_{imp} = 6.25$ kA (single pole)
 - $I_n = 20$ kA
 - $I_{max} = 40$ kA

7P Series – Surge Protection Devices (SPDs)

Type 1 + 2 SPDs designed for charging stations
Also suitable for standard AC applications
Compact size with no leakage current
High discharge current up to 50 kA I_{imp}
For single and three phase systems (230/400 V)

Each module has a combined high energy varistor block and a high-performance spark gap (GDT) that ensures:

- high discharge current
- high insulation resistance that eliminates leakage current
- no following current

7P Series – NEW Type 2 SPDs for Photovoltaic Applications

Type 2 SPDs for PV systems from 750 up to 1500 VDC of U_{CPV}



Type 7P.23.9.750.x020

- PV SPD Type 2
- $U_{CPV} = 750$ V DC
 - $I_n = 20$ kA
 - $I_{max} = 40$ kA



Type 7P.23.9.000.x015

- PV SPD Type 2
- $U_{CPV} = 1020$ V DC
 - $I_n = 15$ kA
 - $I_{max} = 40$ kA



Type 7P.23.9.500.x015

- PV SPD Type 2
- $U_{CPV} = 1500$ V DC
 - $I_n = 15$ kA
 - $I_{max} = 40$ kA



Type 7P.02.8.275.1012

- SPD Type 1+2 for single phase TT (TN-S) systems



Type 7P.04.8.275.1012

- SPD Type 1+2 for three phase TT (TN-S) systems



Type 7P.05.8.275.1012

- SPD Type 1+2 for three phase TN systems

x = optional remote connector



7P Series
See technical data sheet

Approvals
(according to type)



7P Series
See technical data sheet

Approvals
(according to type)





Building automation



Elevators and lifts



Automation for blinds, grilles and shutters



Hoists and cranes



Panels for electrical distribution



Pump control

78 Series – Switch mode power supplies

15 W low profile switch mode power supply. Modular LED driver up to 12 W. TÜV certified compliance with IEC61347-2-13. 35 mm rail (EN 60715) mount.

- 24 V DC, 12 W output
- 17.5 mm wide
- Suitable for SELV applications
- Modular LED driver
- Suitable for general use (15 W - 40 °C, 12 W - 50 °C)
- TÜV certified, 12 W, 24 V DC
- UL approved up to 15 W, 24 V at 50 °C for industrial and 6M applications



Type 78.12.1.230.2402



78 Series
See technical data sheet

Approvals
(according to type)





FINDER PLC
Opal Way - Stone Business Park - STONE, STAFFORDSHIRE - ST15 0SS - UK
tel +44(0)1785 818100 – enquiries.uk@findernet.com

findernet.com



Prices, features, specifications, capabilities, appearance and availability of our products and services are subject to change without notice. FINDER assumes no responsibility for the presence of possible errors or insufficient information in this document. In case of discrepancies between the printed and online versions, the latter prevails.

ZQUENXXXSP5 - 1/2024 - Industrial - New Products